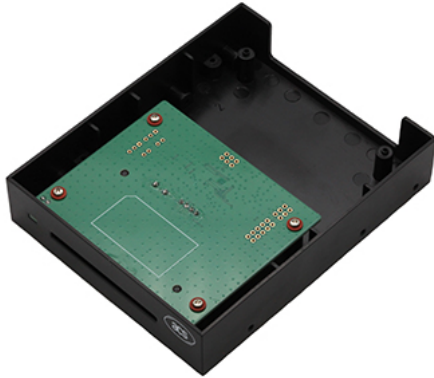


ACR39F PC drive bay reader + internal connector



© 2022 Dot Origin Ltd

The ACR39F USB reader from ACS is based on the popular ACR39 electronics, housed in a lightweight frame that fits comfortably into a standard PC 3.5" drive bay. This reader is fully PC/SC, CCID and EMV Level 1 compliant and supports all ISO 7816 microprocessor-based smartcards as well as many popular memory cards.

Ideal for many smartcard-based applications on desktop PCs, the reader comes complete with WHQL approved Windows drivers, as well as support for other operating systems such as Linux.

The ACR39F is a cost-effective way of incorporating a smartcard reader inside a PC for added convenience and security. This model has a smart black fascia and comes with an internal, detachable USB 2.0 cable to connect.

A USB contact smartcard reader designed to fit in a standard PC 3.5" drive bay. Supplied with a detachable, internal USB cable.

To buy, visit:

<https://www.smartcardfocus.com/shop/ilp/id~930/p/index.shtml>

This Product Briefing has been produced by Dot Origin Ltd, the smart card experts behind SmartcardFocus.com. If you have a query email sales@smartcardfocus.com or call us on +44 (0)1428 685250.